

Key Team Members



Brad Lerner, MD
President



Robert Jackson
Chief Operating Officer



Robyn Mauck
Physician Liaison



Eric Jackson
VP, Physician & APP Recruitment
OneOncology & United Urology Group
eric.jackson@oneoncology.com



Ryan Swailes
Director of Physician Engagement
United Urology Group



Rachel Rogers
Mgr, Physician & APP Recruitment
United Urology Group
rrogers@uniteduro.com



Scan the QR code
for more information
about careers at
Chesapeake Urology.

Joining Chesapeake Urology

A UNITED UROLOGY GROUP AFFILIATE



Welcome to Chesapeake Urology



Chesapeake Urology is the largest urology practice in Maryland and the Mid-Atlantic region, providing a comprehensive array of urologic services to patients throughout Anne Arundel, Baltimore, Harford, Howard, Carroll, Montgomery, Prince George’s, Wicomico, Worcester, MD counties, Baltimore City, and Sussex County, DE.



Chesapeake Urology operates over 20 medical offices, more than one dozen AAAHC-certified ambulatory surgery centers, two prostate cancer centers for radiation therapy, and the IR Centers at Chesapeake Urology, a state-of-the-art Interventional Radiology (IR) Center offering prostatic artery embolization (PAE) for the treatment of BPH/enlarged prostate.



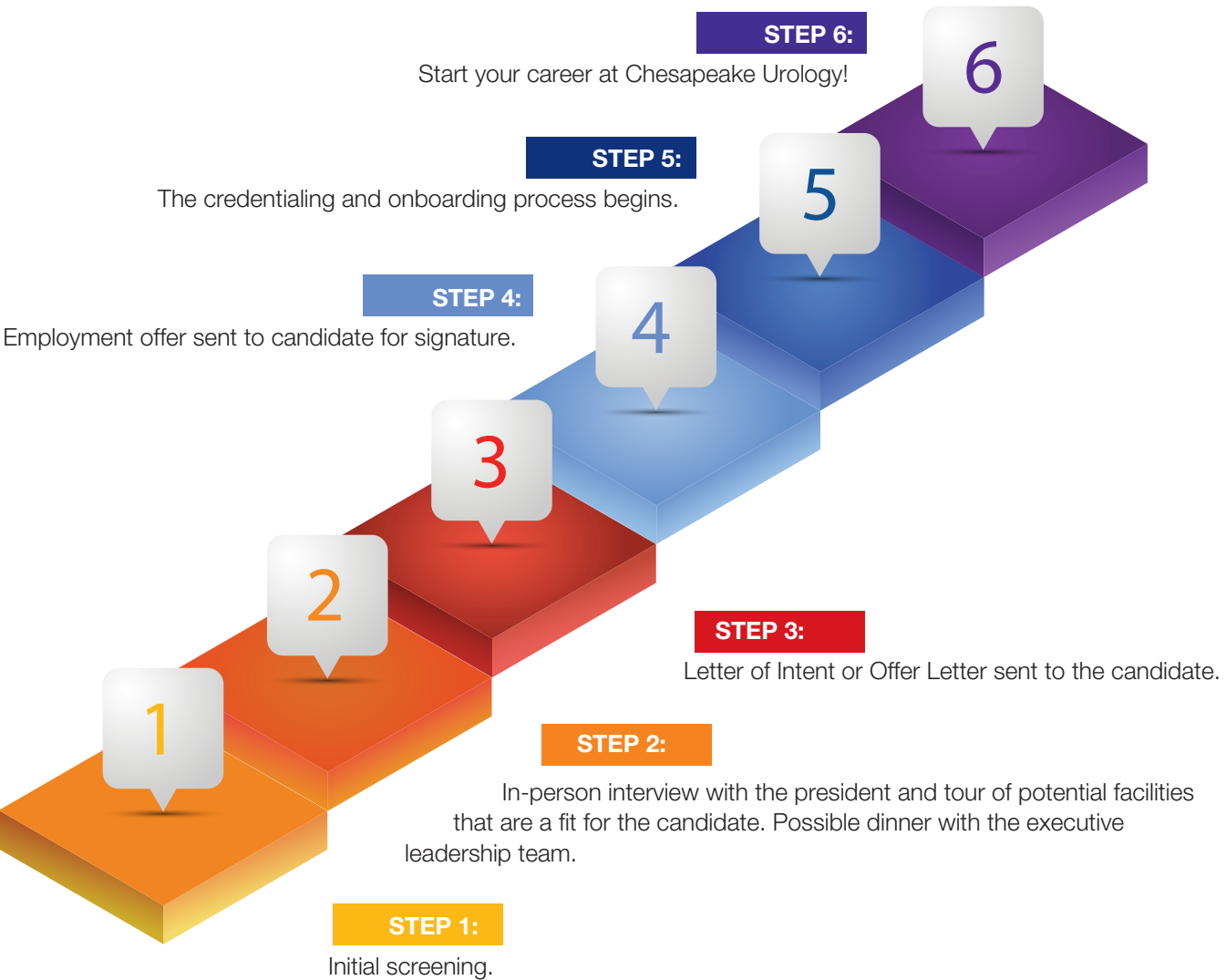
Its integrated approach to urologic care provides patients with access to super specialists, a comprehensive support team of healthcare professionals, innovative diagnostic tools, highly advanced treatments and therapies, and access to the latest clinical trials.



Chesapeake Urology has been named one of the top places to work in healthcare nationally by *Modern Healthcare* magazine and *Becker’s ASC Review*, and locally by the *Baltimore Sun*, *Baltimore* magazine, and the *Baltimore Business Journal*.

Joining Chesapeake Urology

From career support and professional growth to mentorship and work/life balance, there are many benefits to being a part of Chesapeake Urology. Here’s what you can expect as part of the hiring process:

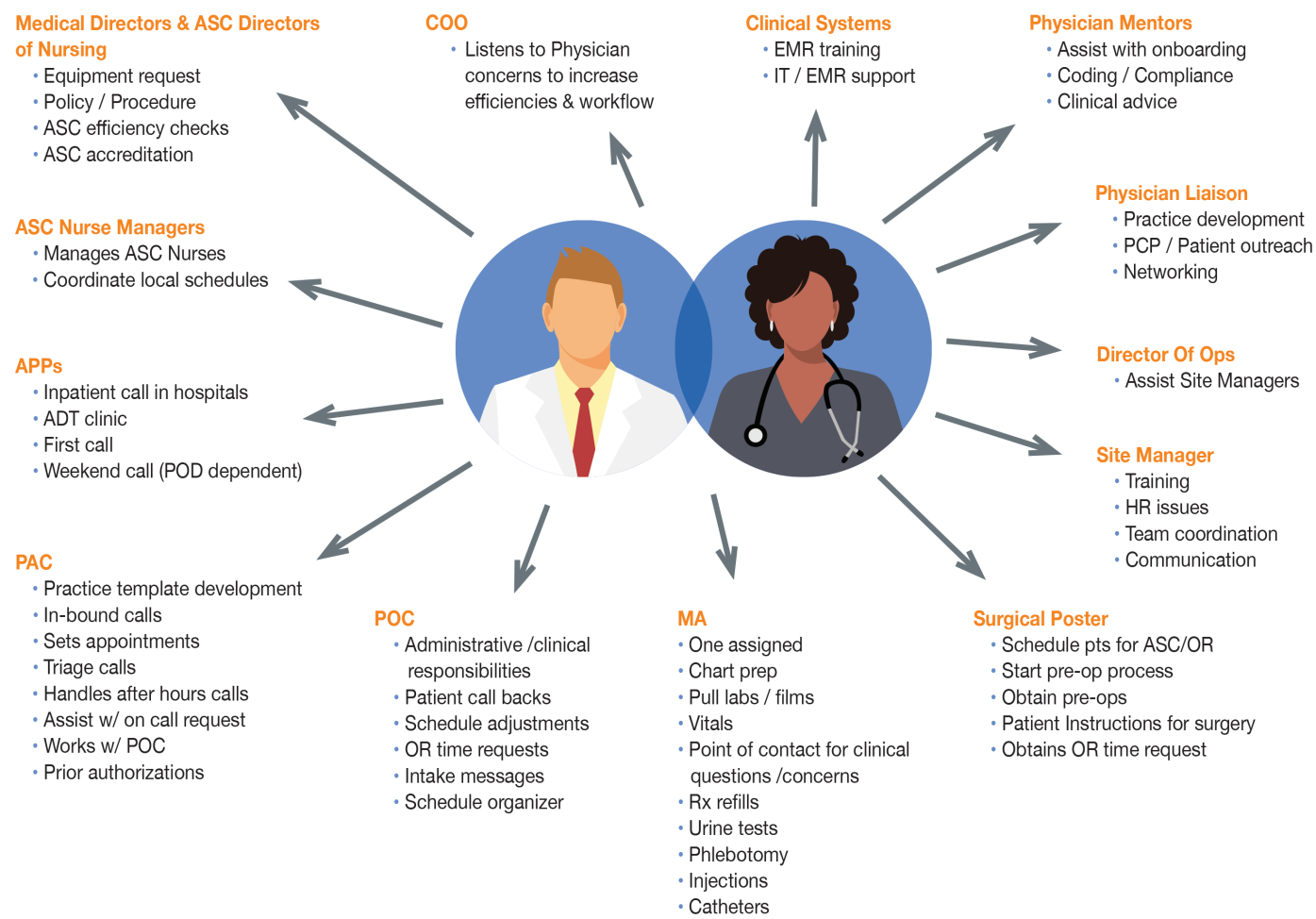


The Team That Surrounds You

WHAT SETS CHESAPEAKE UROLOGY APART

Associate and senior physicians benefit from an experienced team of healthcare and administrative professionals, working together to support your practice and help you provide exceptional patient care.

Our clinics offer modern and comfortable spaces to practice with inviting waiting areas, full-service exam rooms, offices, and other clinical spaces.



Clinical Benefits

AMBULATORY SURGERY CENTERS (ASC)

Chesapeake Urology’s ambulatory surgery centers are certified by the Accreditation Association for Ambulatory Health Care (AAAHC). Physicians have access to state-of-the-art urological equipment for surgery and surgical staff (nurses, surgical technicians, medical assistants) are specialty trained in urological care.



CHESAPEAKE UROLOGY PROSTATE CANCER CENTERS

The Chesapeake Urology Prostate Cancer Centers offer a variety of treatment options including cutting-edge therapies such as IMRT/IGRT.

Unlike other radiation therapy centers that treat various kinds of cancer, Chesapeake Urology’s centers only specialize in and focus on prostate cancer. The team includes radiation oncologists who work closely with referring urologists and the prostate cancer care team, radiation physicists, medical dosimetrists, and radiation therapists. Providing patients with a dedicated radiation therapy center, specially equipped with advanced technology is an important component of our comprehensive prostate cancer program.



IR CENTERS AT CHESAPEAKE UROLOGY

The state-of-the-art Interventional Radiology (IR) Centers at Chesapeake Urology offers the latest minimally invasive, image-guided technology. For patients diagnosed with BPH/enlarged prostate, IR Centers offer prostatic artery embolization (PAE), an innovative procedure for the treatment of this common condition. Experienced interventional radiologists work with urologists to provide a continuum of care and excellent outcomes for patients.



Maryland: A Great Place to Live, Practice, Thrive



With offices throughout Maryland and Southern Delaware, the region provides access to a diverse patient population surrounded by vibrant cities, welcoming communities, nature, and history.

CITY AND SUBURBAN LIVING

The area is rich in cultural and recreational activities in cities like Baltimore, home of the Baltimore Orioles and Camden Yards and Ravens football, as well as charming small towns filled with local festivals, farmers’ markets, and family-friendly events. Chesapeake Urology’s office in Annapolis, the state capital, offers the best of city living and life on the Chesapeake Bay, rich in history, culture, and Navy Football. The proximity to Washington, D.C. provides access to the nation’s historic monuments, museums, and landmarks as well as world-class entertainment and shopping venues.

SURF, SAND, AND MOUNTAINS

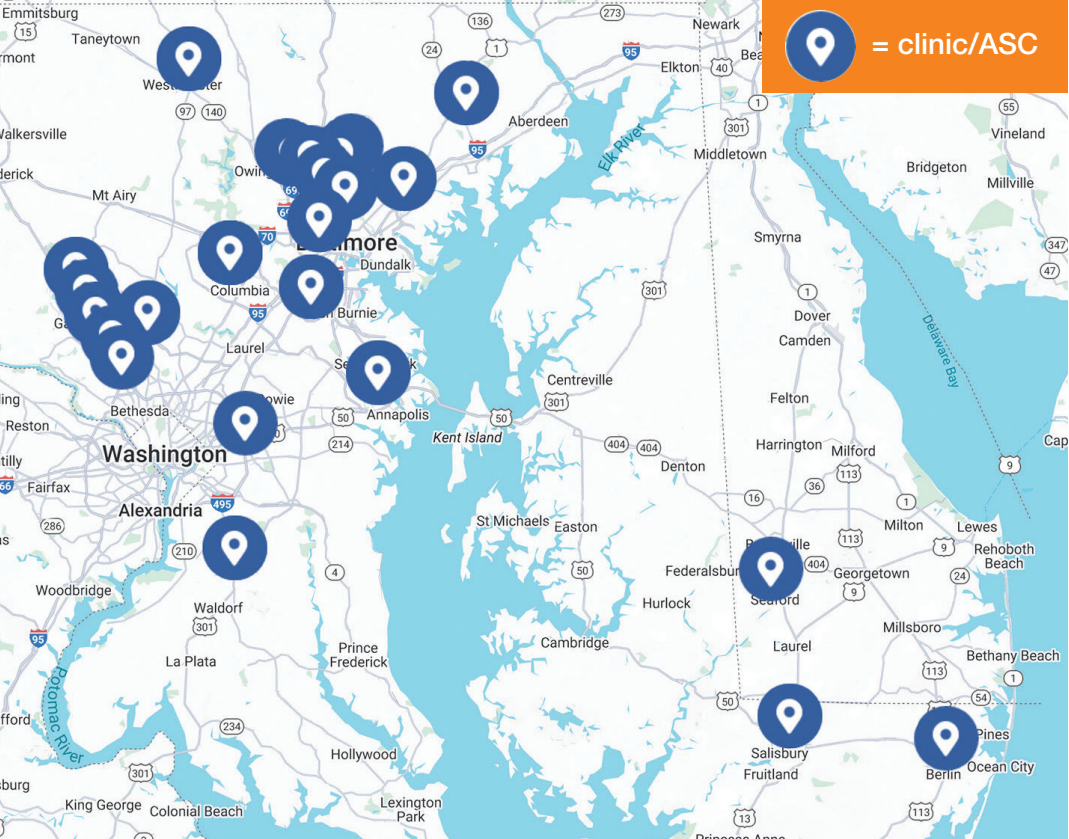
From the stunning beaches of the Eastern Shore to the scenic mountains of Western Maryland, there are plenty of ways to enjoy nature at its best.

Our Eastern Shore locations are near the sandy beaches of Ocean City in Maryland and Bethany and Rehoboth Beaches in Delaware. At the heart of the region is the Chesapeake Bay, offering water enthusiasts opportunities for boating, fishing, and kayaking. For those who love hiking and skiing, the mountains of Western Maryland and Deep Creek Lake deliver scenic trails and peaceful retreats. Serene small towns and wineries dot the more rural landscape of the western part of the state.

SOMETHING FOR EVERYONE

Maryland has something to offer every lifestyle including top-notch public and private schools and nationally recognized universities and colleges, thriving family-oriented communities, leading healthcare systems, and sports and recreation.

Where We’re Located



- Annapolis**
810 Bestgate Rd, Ste 235
Summit ASC - Ste 200
Annapolis, MD 21401
- Bel Air**
201 Plumtree Rd, Ste 210
Summit ASC - Ste 200
Bel Air, MD 21015
- Berlin**
314 Franklin Ave, Ste 302
Berlin, MD 21811
- Bethesda**
6410 Rockledge Dr, Ste 503
Bethesda, MD 20817
- Brandywine**
7704 Matapeake Business Dr, Ste 310
Summit ASC - Ste 300
Brandywine, MD 20613
- Columbia**
10710 Charter Dr, Ste 130/230
Summit ASC - Ste 140
Columbia, MD 21044
- Franklin Square**
6820 Hospital Dr, Ste 210
Summit ASC - Ste 200
Baltimore, MD 21237
- Hanover**
7580 Buckingham Blvd, Ste 110
Summit ASC - Ste 100
Hanover, MD 21076
- Holy Cross Germantown**
19851 Observation Dr, Ste 455
Summit ASC - Ste 445
Germantown, MD 20876
- IR Centers at Chesapeake Urology**
901 Dulaney Valley Rd, Ste 902
Towson, MD 21204
- Largo**
950 Harry S Truman Dr. N, Ste 500
Upper Marlboro, MD 20774
- Rockville**
9420 Key West Ave, Ste 420
Rockville, MD 20850
- St Agnes Hospital Campus**
3407 Wilkens Ave, Ste 210
Summit ASC - Ste 200
Baltimore, MD 21229
- Salisbury**
1111 Mount Hermon Rd
Summit ASC
Salisbury, MD 21804
- Seaford, DE**
220 Pennsylvania Ave.
Seaford, DE 19973
- Silver Spring**
3801 International Dr, Ste 310
Summit ASC - Ste 300
Silver Spring, MD 20906

Sinai
5051 Greenspring Ave, Ste 302
Baltimore, MD 21209

Summit Ambulatory Surgery Center - Park Potomac
12435 Park Potomac Ave, Ste 410
Potomac, MD 20854

The Continenace Center
21 Crossroads Dr, Ste 200
Owings Mills, MD 21117

The Prostate Center at Gaithersburg
808 W. Diamond Ave.
Gaithersburg, MD 20878

The Prostate Center at Quarry Lake
2800 Quarry Lake Dr, Ste 180
Baltimore, MD 21209

Towson
6535 N. Charles St, Ste 500
Summit ASC - Ste 625
Towson, MD 21204

Union Memorial
3333 N. Calvert St, Ste 600
Summit ASC - Ste 600
Baltimore, MD 21218

Westminster/Summit ASC
410 Malcolm Dr, Ste A
Westminster, MD 21157

Woodholme
1838 Greene Tree Rd, Ste 460
Summit ASC - Ste 450
Pikesville, MD 21208



Take an interactive tour of our locations – just scan the QR code.